

SPONSORSHIP OPPORTUNITIES



KA MUA, KA MURI: **LOOKING BACK FOR THE FUTURE OF IMPACT ASSESSMENT**

The 46th Annual Conference of the
International Association for Impact Assessment

20-23 April 2027 | Ōtautahi Christchurch, Aotearoa New Zealand



IAIA27
HOSTED BY



ABOUT US



What we do...

We are a non-profit association dedicated to the study and application of impact assessment.



Who we are...

We are a 46-year-old global network of 1,300 individual and organization members from 110 nations.



What we believe...

We believe in creating meaningful change by making better, informed decisions that lead to positive outcomes for the environment, nature, and societies across the globe.

WHAT IS IMPACT ASSESSMENT?

Impact assessment (or Assessment of Environmental Effects) is a transformative process designed to **inform and guide decisions and actions** by government, businesses, or individuals. It aims to **maximize positive outcomes** while **minimizing negative effects**, ultimately fostering sustainable development.

It evaluates the impact of this...

Policies

Projects

Plans

Programs

...on this:

The Environment

Society & Communities

Jobs & the Economy

Public Health

Cultures & Tradition

Equity & Inclusion

Laws & Regulations

Technology

OUR COMMITMENT TO THE UN'S SUSTAINABLE DEVELOPMENT GOALS

Impact Assessments (IAs) play a **crucial role** in helping both private and public entities achieve the UN's Sustainable Development Goals.



IAs promote a positive impact on the **health of local communities**.



IA practices **elevate university programs**, especially in public policy.



IAs are key tools used in **drinking water and sewage system projects**.



IAs promote the **energy transition** to renewable energy projects.



Major financial institutions rely on IAs for **resilient infrastructure outcomes**.



IAs were created to assess the **environmental impact** of policies and projects.



IAs play a critical role in the **UN High Seas Treaty**.



IAs highlight risks to **global biodiversity**.



IAIA's **international conferences** are at the heart of this engagement.

IAIA MEMBERS ARE...

- ✓ **DIVERSE.** { 1,300 individual and organization members from 110 nations.
- ✓ **SUCCESSFUL.** { 63% are executive/senior level; 26% are mid-level.
- ✓ **ESTABLISHED.** { 51% are 45-64 years old; 22% are 35-44 years old.
- ✓ **LOYAL.** { 65% have been members for 3+ years; 33% have been members for 10+ years.
- ✓ **ENGAGED.** { 73% make use of the IAIA and members-only websites.



MARKETING CAPABILITIES

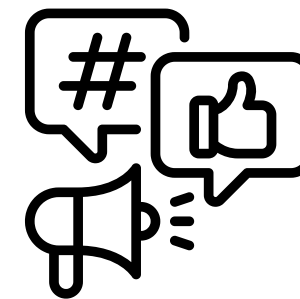


Website

as of 31 December 2025

Annual Visitors: 135,440

Unique Page Views: 340,660



Social Media Followers

as of 31 March 2026

LinkedIn: 19,364

Facebook: 7,685

YouTube: 1,490



Email Newsletter

Subscribers: +15,700

Open Rate: +30%

IAIA27: ŌTAUTAHI CHRISTCHURCH, AOTEAROA NEW ZEALAND

KA MUA, KA MURI: LOOKING BACK FOR THE FUTURE OF IMPACT ASSESSMENT

IAIA27 will bring together global leaders and practitioners to reflect on over 50 years of impact assessment and explore how the field can evolve—drawing on past lessons, diverse knowledge systems, and Indigenous perspectives—to meet today’s complex challenges and shape a more effective future.

Key Topics

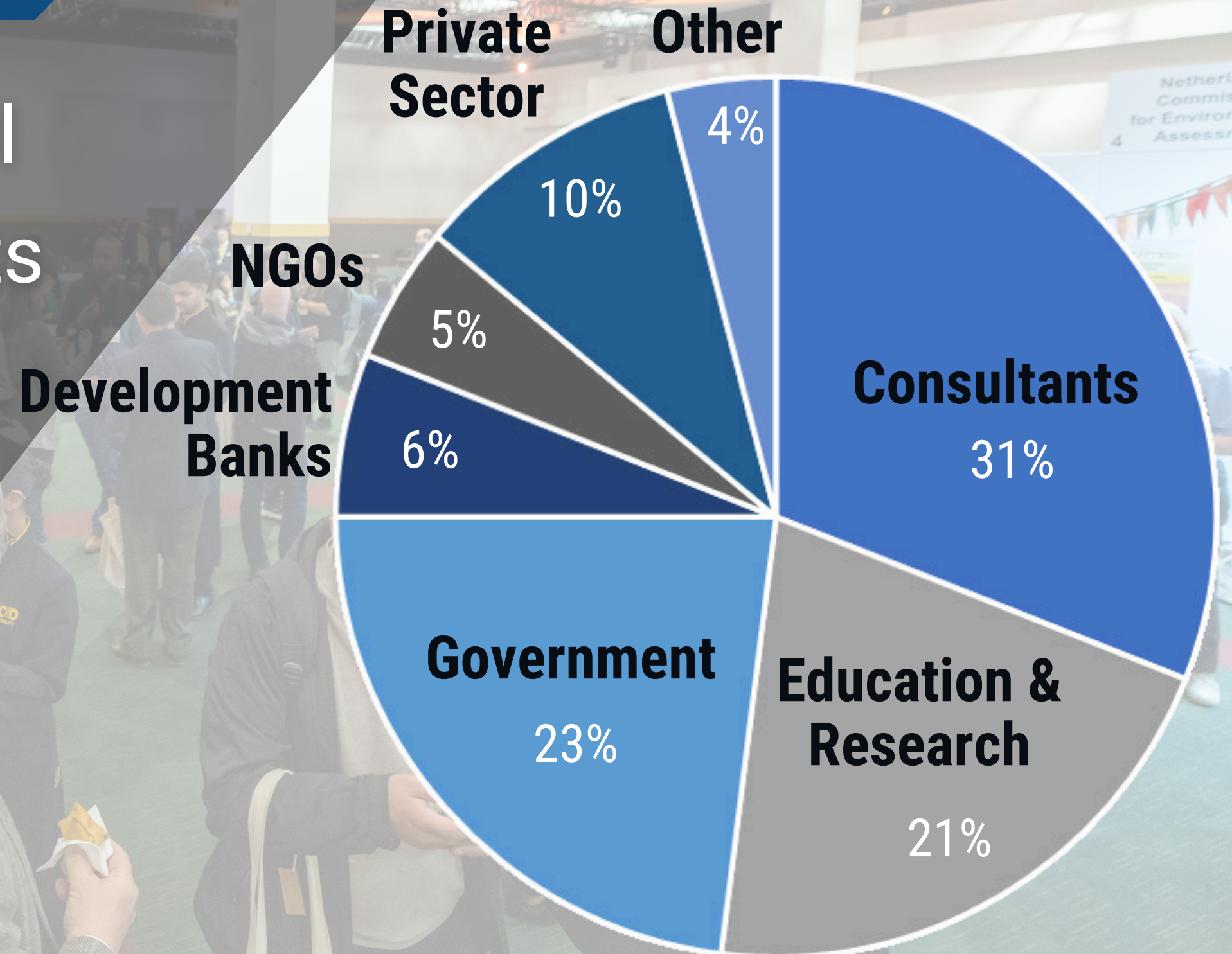
- The evolution of impact assessment: how did we get here, and where are we headed?
- Being adaptive: rethinking impact assessment in a rapidly changing world
- Revisiting past practice: lessons we should not have forgotten
- Respecting traditional, cultural, and local knowledge in impact assessments
- Indigenous-led impact assessment and management
- Changing baselines and the critical role of monitoring
- Learning from past cases to better predict future impacts
- General impact assessment and each of IAIA’s special-interest Sections

HOSTED BY:



CONFERENCE ATTENDEES

In Christchurch, your brand will reach **900+** key participants in the global impact assessment community, representing **over 80 nations**.



2026 EVENT IN NUMBERS



1,401

Total number of IAIA26 attendees



76

Countries represented at IAIA26



564

Presentations, including 59 posters



158

Technical sessions over 3.5 days



14

Pre-conference training courses



Innumerable + Invaluable

Ideas exchanged and connections forged

WHAT DID OUR ATTENDEES SAY?

TAGS & POSTS ON SOCIAL MEDIA

"#IAIA fosters a forum for excellent collaboration & networking, technical exchange with global experts of diverse backgrounds & vast expertise... An excellent conference in which global challenges are analyzed as well as project successes and failures, and life-long relationships are established."

"What a week at #IAIA25! At the heart of this conference is the amazing international community of practitioners that participate every year...I highly recommend attending..."

"Departing #IAIA25 with new ideas and connections that I am super excited to explore further - all in the spirit of earlier, broader and more impactful intelligence about impacts on people and places."

“

IAIA is truly a value-for-money experience. This is my third time attending, and each time I return to work **energized, inspired, and equipped** with fresh ideas and perspectives. The insights gained and connections made consistently **elevate my practice.**

- IAIA25 participant

“

Impact assessment is both specialized and diverse, and IAIA is really **the only international forum** where practitioners, governments, academics and others active in the field can get together and share ideas.

- IAIA25 participant

“

The absolute **breadth of expertise** was astounding. Every minute and inch of the conference was a learning experience. **Exceptional.**

- IAIA24 participant

“

I consistently come away with **new insights, practical tools, and a better understanding** of emerging trends and good international practice.

- IAIA26 participant

JUST A FEW OF THE ORGANIZATIONS REPRESENTED

Multilateral Banks

African Development Bank
Asian Development Bank
European Bank for Reconstruction & Development
European Investment Bank
Inter-American Development Bank
International Finance Corporation
World Bank Group

Government Agencies

British Columbia Environmental Assessment Office
Department of Environment, Fiji Islands
Environment Agency, Abu Dhabi
Environmental Protection Agency, Hong Kong
EU Commission
Health Canada
Impact Assessment Agency of Canada
Ministry of Blue Economy and Fisheries, Tanzania
Ministry of Energy, Water Resources & Irrigation, Nepal
Netherlands Commission for Environmental Assessment
Norwegian Environment Agency

Consultancies

AECOM	Stantec
Arcadis	Tetra Tech
Cardno	Worley
Hatch	WSP
SLR Consulting	

Private Industry

Alcoa	ExxonMobil
Anglo American	Iberdrola
BP	OceanaGold
Centerra Gold	Red Sea Global

Indigenous

Walalakoo Aboriginal Corporation
Ngāti Mākino Iwi Authority
Yellowknives Dene First Nation
Wuikinuxv Nation
Kebaowek First Nation
Qikiqtani Inuit Association

IGOs / NGOs

European Commission
Fauna and Flora International
Global Commons Alliance
International Fund for Agricultural Development
International Union for Conservation of Nature
Oxfam
UNEP
UNDP

Students / Academia / Research

Chiba University of Commerce
Chinese Research Academy of Enviro. Sciences
Columbia Law School
Federal University of Sao Paola
Johns Hopkins University
Instituto Superior Técnico, Univ. de Lisboa
Kenya Marine & Fisheries Research Institute
Korea Environment Institute

ASIA-PACIFIC HAS BEEN WELL REPRESENTED, TOO!

Over 400 organizations in the Asia-Pacific region have been represented at IAIA conferences since 2019 including:

AECOM
Allied Environmental Consultants Limited
Anwar Muhammad Foundation
Appraisal Center for Environment & Engineering, MEP (China)
Arcadis Australia Pacific
Arup Australia Pty Ltd
Asian Development Bank (ADB)
Asian Environmental Compliance and Enforcement Network
Asian Infrastructure Investment Bank (AIIB)
Asian Research Institute for Environmental Law
Australian Cultural Heritage Management
Australian Infrastructure Financing Facility for the Pacific (AIFFP)
Australian National University
Boffa Miskell Ltd.
Brisbane Airport Corporation
Brunei Shell Petroleum Co Sdn Bhd
Camphora Pte Ltd
Central Queensland University
Centre for Social Responsibility in Mining, UQ
CSIRO
Curtin Institute for Energy Transition
Department of Agriculture (Philippines)
Department of Environment (Fiji)
Department of Environment (Tonga)
Department of Environmental Protection & Conservation (Vanuatu)
Department of Foreign Affairs and Trade (Australia)
Department of Health, Ministry of Public Health (Thailand)
Department of Roads (Nepal)
DHI Water & Environment
Diponegoro University
DT Global
Eco Logical Australia Pty Ltd
Ecoz Environmental Consultants
Electricity Generating Authority of Thailand (EGAT)
Engineering Advancement Association of Japan
Environment and Ecology Bureau, Hong Kong SAR Government
Environmental Conservation Department (Myanmar)
Environmental Protection Administration, ROC
Environmental Protection Agency (Maldives)
Environmental Protection Agency (Micronesia)
Environmental Research Institute Chulalongkorn University
Enviro-Safe Consulting Services
Envisar Perintis Sdn Bhd
EnvO Environmental Management Consulting Services Co., Ltd
ESS Consulting Ltd
Executive Counsel Limited
Fitzgerald Applied Sociology
Fudan University

Gaia Consult Inc
GHD Pty Ltd
Glencore Coal
Green Climate Fund
Green Economy Coalition Foundation
Greentrends LLC
Griffith University
Hatch Ltd
Hohai University
Hong Kong Institute of Environmental Impact Assessment
Hongsa Power Company Limited
Housing & Development Board Singapore
ICOMOS
Independent Consumer & Competition Commission PNG
Independent Research Institute of Mongolia
Indonesian Center for Environment Law
Institute for Sustainable Energy Policies
Institute of Environment and Resources
Institute of Science Tokyo
International Finance Corporation (IFC)
Jacobs
James Cook University
Japan International Cooperation Agency (JICA)
Japan NUS Co., Ltd.
Keio University
Korea Environment Corporation
Korea Environment Institute
Korea Institute of Civil Engineering and Building Technology
Korea Research Institute for Human Settlements
Korea University
K-water
Kyung Hee University
LCDA Holdings Sdn Bhd
Lincoln University
Macquarie University
Malaysian Association of Social Impact Assessment
Malaysian Institute of Planners
Mandai Park Development
Massey University
Meiji University
Ministry of Commerce, Industry & Environment (Nauru)
Ministry of Ecology and Environment (China)
Ministry of Energy, Water Resources & Irrigation (Nepal)
Ministry of Environment (Korea)
Ministry of Environment (Taiwan)
Ministry of Environment, Lands and Agriculture Development (Kiribati)
Ministry of Forests and Environment (Nepal)
Ministry of Meteorology, Info, Disaster Mgmt, Environment, Climate Change and Communication (Tonga)

Ministry of Natural Resources & Environmental Conservation (Myanmar)
Ministry of Natural Resources and Environment (Samoa)
Ministry of Public Works and Transport (Cambodia)
Mott MacDonald Hong Kong Limited
Nagoya University
Nankai University
National Biodiversity Authority (India)
National Heritage Board (Singapore)
National Institute of Development Administration (Thailand)
National Institute of Ecology (Korea)
National Institute of Environmental Research (Korea)
National Parks Board Singapore
Nature Positive
Nepal Association for Impact Assessment
Nepal Electricity Authority
New Development Bank
New Guinea Binatang Research Center
Ngāti Māhino Iwi Authority
NOPSEMA
North Queensland Bulk Ports Corporation Ltd
NSW Department of Planning & Environment
Ocean University of China
Open Development Cambodia
Oyu Tolgoi LLC
PanAust
Philippine Learning Center for Environment and Social Sustainability
PLANMalaysia
Planning and Urban Management Agency (Samoa)
PNG Forest Authority
Powerlink
PricewaterhouseCoopers
Protean Consulting PLT
PT Mitra Rekayasa Keberlanjutan
PTT Public Company Limited
Pusan National University
Queensland Department of Environment and Science
Queensland University of Technology
Ramboll
Ratchaburi Electricity Generating Holding Public Company Limited
RINA Consulting
Rio Tinto
Royal Haskoning DHV
Royal University of Phnom Penh
SAVE Rivers
Sarawak Energy Berhad
Seoul National University
Shanghai Academy of Environmental Science
Shanghai Municipal Engineering Design Institute (Group) Co., Ltd

Shell Australia
Shenzhen Polytechnic University
Silpakorn University
Singapore International Mediation Centre
SN Aboitiz Power Group
Social Impact Strategies
South Australian Museum
Southern Cross University
SPREP Secretariat of the Pacific Regional Environment Programme
Stantec Consulting Ltd.
Suranaree University of Technology
Sustainable Environment Research Institute, Chulalongkorn University
Sustainable Minerals Institute, UQ
Swinburne University of Technology
Team Labs & Consultants
Teck Australia
The Asia Foundation
The Borneo Project
The Nature Conservancy
Times Higher Education
Toho University
Tokyo City University
Tokyo Institute of Technology
Town & Country Planning Department, Malaysia
Transparency International Australia
Tsinghua University
Umwelt Australia
United Nations Development Programme
United Nations Environment Programme
University of Adelaide
University of Hong Kong
University of Indonesia
University of Melbourne
University of Otago
University of Papua New Guinea
University of Queensland
University of the Philippines
Urban Redevelopment Authority (Singapore)
Urbis
VicRoads
Voconiq
Walalakoo Aboriginal Corporation
Waste Management Corporation Maldives
Western Sydney University
WHITRAP Shanghai
Wildlife Conservation Society
Woodside Energy Ltd.
World Bank
WSP

WHAT IS IN IT FOR ATTENDEES?



Discover the **latest impact assessment trends** around the world.



Strengthen approaches to **predicting and managing future impacts**.



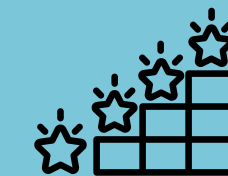
Reflect on **50+ years** of impact assessment to inform future practice.



Learn how to better integrate **Indigenous, traditional, and local knowledge** into practice.



Network with **global leaders** in impact assessment, sustainability, and environmental governance.



Gain **practical tools** for adaptive assessment, monitoring, and decision-making.

Attendees value IAIA events, and you will, too! IAIA25 survey respondents reported...

PLUS...

86%

learned something new directly applicable to their work

94%

shared information learned at IAIA25 with colleagues

95%

want to continue working with people they met at IAIA25

WHAT IS IN IT FOR SPONSORS?



Demonstrate leadership in advancing impact assessment to meet today's complex global challenges.



Be recognized as a champion of forward-looking, effective impact assessment practice.



Position your brand at the **forefront of the global conversation** on impact assessment and sustainable development.



Connect with potential clients, future partners, and key players in the field.



Support inclusive, knowledge-driven decision making that respects Indigenous perspectives and diverse knowledge systems.

PLUS...

97%

of IAIA24 and IAIA25 attendees would recommend future IAIA conferences to colleagues.

With high attendee satisfaction and strong engagement, IAIA conferences offer sponsors a trusted platform to connect with a receptive, influential audience.

WHAT IS IN IT FOR YOU?

Your conversations with impact assessment leaders, experts, and peers at IAIA27 will leave you feeling...



inspired to understand and build the **next generation of environmental assessment.**



equipped to tackle your **most ambitious projects and goals.**



CONFERENCE ASSETS

PROGRAM SPONSORSHIP

Opportunities related to the core segments of the conference program.

Opening Plenary

Opening Reception

Conference Gala

Pacific / Indigenous Day

Concurrent Sessions

Theme Forums (4)

Closing Plenary

Final Program

Technical Visits

CULTURAL & COMMUNITY ENGAGEMENT

Connected to the conference location and/or supporting community-oriented initiatives.

Cultural Protocols and Performances

Developing Country Capacity Building

Student / Young Professional Support

CONFERENCE ASSETS

ATTENDEE EXPERIENCE ENHANCEMENTS

Directly enhancing the attendee experience through amenities and services.

Lunches

Mobile App

Pens

Delegate Bags

Notepads

Coffee Break
(3)

Charging Stations

WiFi

Lanyards

Delegate Lounge

Delegate Workspace

***Benefits vary based on item sponsored.
General sponsorship also accepted.***

SPONSOR LEVELS

CONFERENCE-FOCUSED BENEFITS

Sponsor a specific conference asset or provide a general contribution. The total determines your level and benefits.

IAIA27 Contributor

NZ\$6,000 - NZ\$15,000

- Free conference registration
- Name recognition onsite at IAIA27 and in event materials
- Customizable page in IAIA27 mobile app - add links, video, PDFs, and more
- "Sponsor" namebadge ribbons for your IAIA27 attendees

IAIA27 Supporter

NZ\$16,000 - NZ\$31,000

- Free conference registrations
- *Logo* recognition onsite at IAIA27 and in event materials
- Customizable page in IAIA27 mobile app - add links, video, PDFs, and more
- "Sponsor" namebadge ribbons for your IAIA27 attendees
- Pre-event recognition in social media posts and in IAIA e-news

CONFERENCE PLUS YEAR-ROUND BENEFITS

IAIA Strategic Partner

NZ\$32,000+

Strategic partnerships are available which include benefits and visibility BOTH throughout the year and at IAIA27. These include:

- Free conference registrations
- Logo recognition onsite at IAIA27 and in event materials
- Automatic IAIA Corporate Member, with featured directory entry
- Year-round recognition on IAIA institutional assets, including website, social media, blog posts, and annual report
- Individual memberships for employees
- Invitation to exclusive roundtables and strategic forums with global thought leaders and key influencers
- Opportunities for custom training and access to IAIA's online training

Additional benefits available for certain conference assets.

INTERESTED?

Contact us to find a package just right for you.



Bridget John

IAIA HQ
bridget@iaia.org
+1.701.297.7908



Lachlan Wilkinson

Conference Co-Chair
LWilkinson@jbsg.com.au

INTERNATIONAL ASSOCIATION FOR IMPACT ASSESSMENT

International Headquarters

3212 14th Avenue S, Suite 1 | Fargo, ND 58103-6306 | USA

+1.701.297.7908 | info@iaia.org | www.iaia.org

